

Which Side Are You On?

New Orleans 2nd Line-Style

Flute

Florence Reese, 1931

Intro Verse Chorus Bridge, I. V. C. B., C. C. B. I. (low brass only on last intro)

Intro

Intro bass riff, play only if not enough bass
4x at top, 2x when return



Intro hits,
Play after bass riff has played 4x (2x when returning)

Last time
only



Don't

Verse

13



scab - for the bos - ses, don't lis - ten to their lies! Us

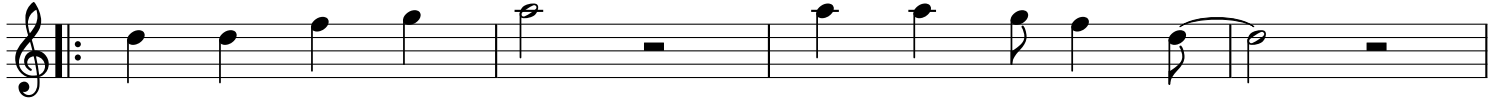
17



poor folks hav - en't got a chance un - less we or - gan - ize!

Chorus

2



Which side are you on? Which side are you on?

25



Which side are you on? Which side are you on?

Bridge

29



33

